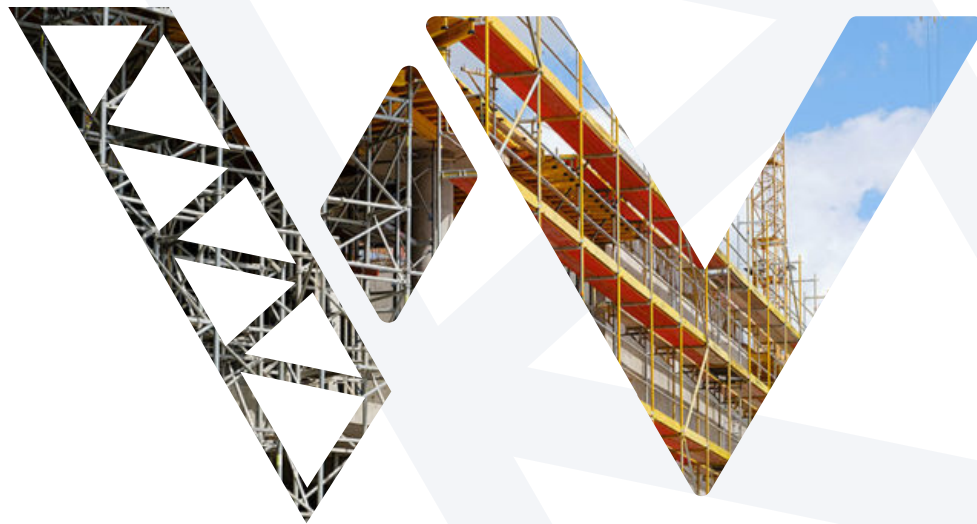




**TOGETHER
WE ACHIEVE.**



 Growing Professional
Scaffolding Services Provider and
Access solutions in K.S.A.



ABOUT COMPANY

Wing International is a leading provider of scaffolding solutions for construction and renovation projects in Saudi Arabia. Since its establishment in 2008, the company has built a reputation for delivering high-quality scaffolding products and services that exceed industry standards. Wings International offers a range of services including scaffold design, installation, rental, and maintenance. The company's team of qualified engineers and technicians work closely with clients to design and install scaffolding solutions that meet their specific needs and project requirements. The company also offers rental options for short-term and long-term projects, as well as maintenance and inspection services to ensure the safety and reliability of scaffolding equipment. The company's products are designed to be safe, reliable, and efficient for a variety of construction and renovation projects.

OUR VISION & MISSION

• VISION

Our Vision is to lead & Provide safe and reliable scaffolding solutions for industrial maintenance, plant shutdowns, industrial construction and renovation projects & innovating scaffolding solutions to better meet the needs of customers.

• MISSION

1. Providing high-quality scaffolding products and services that are safe, reliable, and efficient
2. Offering exceptional customer service and support to ensure customer satisfaction.
3. Emphasizing safety and quality in all aspects of the company's operations, including design, installation, maintenance, and rental.

Wings International may offers in-house training to its employees to ensure they have the necessary skills and knowledge to provide high-quality scaffolding solutions and services to clients.

- **Scaffolding safety:** In-house training provided to ensure that employees understand the importance of safety when working with scaffolding. This training cover topics such as fall protection, hazard identification, and proper use of personal protective equipment.
- **Scaffolding design:** In-house training provided to employees who are responsible for designing scaffolding solutions for clients. This training cover topics such as load calculations, structural design, and material selection.
- **Installation and dismantling:** In-house training provided to employees who are responsible for installing and dismantling scaffolding on job sites. This training cover topics such as proper assembly and disassembly techniques, bracing and anchoring, and proper use of tools and equipment.
- **Customer service:** In-house training provided to employees who interact directly with clients, to ensure that they are able to provide high-quality customer service. This training cover topics such as effective communication, problem-solving, and conflict resolution.

Wings International ensures that its employees have the necessary skills and knowledge to provide safe, reliable, and efficient scaffolding solutions to clients. By investing in the training and development of its employees, Wings International helps to improve the quality of its services, build customer loyalty, and differentiate itself from competitors in the market.

QUALITY POLICY



• SAFETY POLICY

Safety is a top priority in our industry. When it comes to scaffold safety, we promote the safest work environment in order to protect our employees, our customers and the public.

• QUALITY POLICY

Wing International Industrial Services commits to satisfy customers by supplying Quality Services on time ; every time at competitive price. This shall be achieved by motivating employees through Training and Continual improvement of the Quality Improvement System.

• OUR GOAL

“TOGETHER WE ACHIEVE”

SERVICES

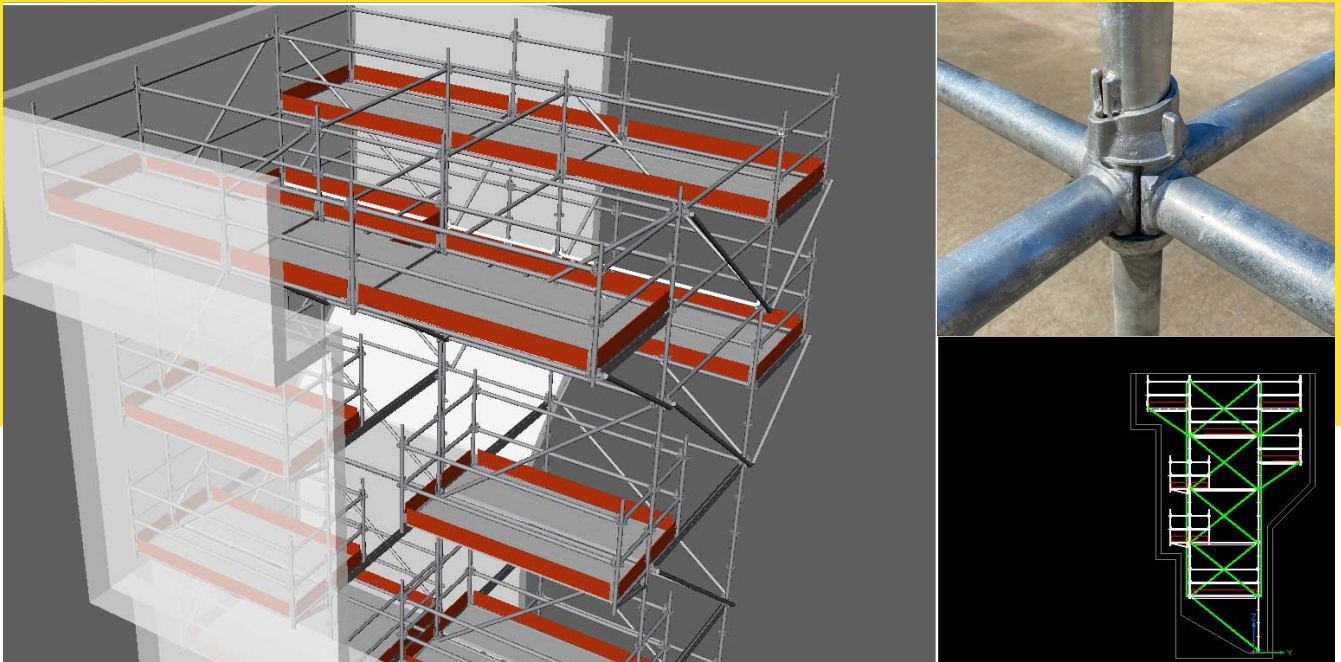


INDUSTRIAL SCAFFOLDING ERECTION & DISMANTLING

The process of assembling and disassembling temporary structures that are used to support workers and materials during construction, maintenance, repair, and other industrial activities. Scaffolding is commonly used in industries such as petrochemicals, oil & gas, industrial construction, shipbuilding and power generation. Wing International provides industrial scaffolding erection and dismantling in Saudi Arabia.

The process of erecting and dismantling industrial scaffolding involves several steps, including:

- **Planning:** Before any scaffolding is erected, a detailed plan is created that takes into account the height and weight requirements, access points, and safety measures.
- **Site preparation:** The area where the scaffolding will be erected is cleared of any obstacles, debris, or other hazards.
- **Base assembly:** The base of the scaffolding is erected, which consists of the scaffolding feet, base plates, and standards.
- **Ledger assembly:** ledgers are horizontal tubes that connect the standards and provide support for the scaffolding boards.
- **Bracing:** Bracing is added to the scaffolding structure to provide stability and prevent it from swaying or collapsing.
- **Platform assembly:** The scaffolding boards are installed on top of the ledgers to create a stable work platform.
- **Safety measures:** Guardrails, safety nets, and other safety measures are installed to protect workers and prevent falls.
- **Dismantling:** When the industrial activity is complete, the scaffolding is dismantled in the reverse order of assembly.



SCAFFOLDING DESIGNING & CALCULATIONS

Scaffolding designing and calculations are an important part of ensuring the safety and stability of a scaffolding structure. The design and calculations are done by a qualified engineer who is knowledgeable about the various types of scaffolding and the specific requirements for each project.

The design of the scaffolding should take into account factors such as the height and weight of the structure, the number of workers who will be using the scaffolding, and the types of materials and tools that will be used on the scaffold. The engineer will also consider the location of the scaffolding, including any potential hazards such as overhead power lines or uneven terrain.

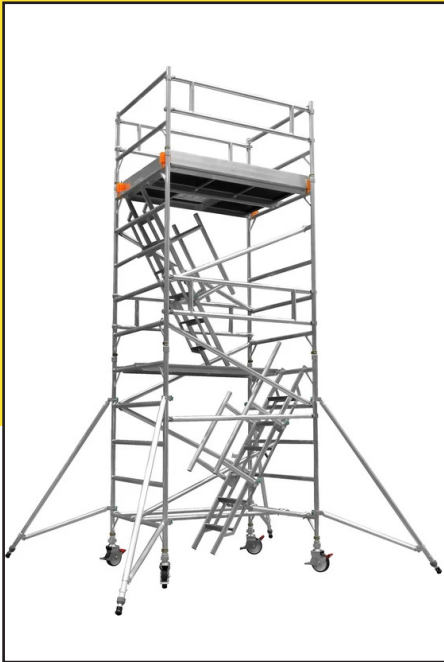
Calculations for scaffolding typically include determining the load capacity of the scaffold, which will depend on factors such as the materials used, the height of the scaffold, and the weight of the workers and equipment. The calculations will also take into account the maximum allowable deflection or bend in the scaffolding, which is important for ensuring the stability and safety of the structure.



SCAFFOLDING RENTAL

We supply scaffolding equipment for temporary use in construction, maintenance, or repair projects. We offer a range of scaffolding types, including frame scaffolding, system scaffolding, and suspended scaffolding, to meet the specific needs of their clients. Renting scaffolding is a cost-effective solution for short-term projects, as it eliminates the need for companies to purchase and store scaffolding equipment that may not be used frequently. Renting also offers the flexibility to adjust the type and amount of scaffolding needed based on the project requirements.

We offer delivery and pickup services, as well as installation and dismantling services, to ensure that the scaffolding is properly installed and meets safety standards. Rental rates may vary based on the type of scaffolding, the duration of the rental, the number of scaffolding units required, and any additional accessories needed. Our team ensures the scaffolding is inspected and maintained regularly to prevent accidents and ensure the safety of workers.



SCAFFOLDING FRAMES

Scaffolding frames are essential components used in the construction industry to support workers and materials while working at heights. There are several factors to consider while renting or purchasing scaffolding frames, including the type of scaffolding needed, the duration of the project, and the budget. It is essential to choose a reputable supplier who offers high-quality scaffolding frames that meet safety regulations and standards.

Renting scaffolding frames is a cost-effective solution for short-term projects, as it eliminates the need for long-term storage and maintenance costs. Rental prices may vary based on the duration of the project, the number of scaffolding frames required, and any additional accessories needed.

We provide proper installation and dismantling services, as well as regular inspections and maintenance to ensure the safety of workers. Wings International follows all safety guidelines and regulations to ensure the safety of workers and the success of the project.

SCAFFOLDING COUPLER



DROP FORGED DOUBLE COUPLER

Weight : 1.00kg

Quality Standard : EN74-1:2005 Class B, AS1576.2

Coating : Available in zinc plated and Hot dip Galvanized

Material : Carbon Steel Q235



DROP FORGED SWIVEL COUPLER

Weight : 1.15kg

Quality Standard : EN74-1:2005 Class A, AS1576.2

Coating : Available in zinc plated and Hot dip Galvanized

Material : Carbon Steel Q235



PUTLOG COUPLOR

Weight : 0.60kg

Quality Standard : AS1576.2, BS1139

Coating : Available in zinc plated

Material : Carbon Steel Q235



SLEEVE COUPLOR

Weight : 1.00kg

Quality Standard : EN 74/1 : 2005

Coating : Available in zinc plated

Material : Carbon Steel Q235



BORED RETAINING CLAMP

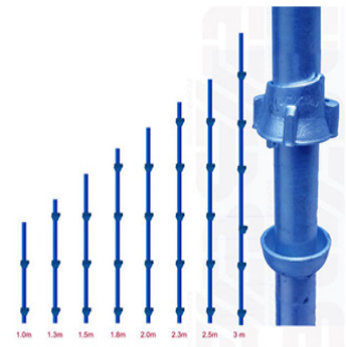
The BRC is used with scaffolding in order to secure scaffolding boards, BRC ensures that scaffolding boards are carefully and safety locked in to the correct position for a safe work environment.

SCAFFOLDING COMPONENTS

VERTICAL POST

- Cup-lock standards are Manufactured from ARAMCO specified steel scaffold tube of 48.3mm outside Diameter with a wall thickness of 3.2mm conforming to EN-10219.
- This cup-lock standards are manufactured in various sizes for access and support.
- All the basic size have cups welded at 500mm c/c intervals.
- The captive mobile upper cups are made of malleable casting to endure rough site handling and welded bottom cups are pressed from deep drawn steel.
- The access standards are provided with integral spigot 150mm long at the top of each standard for making vertical connections.

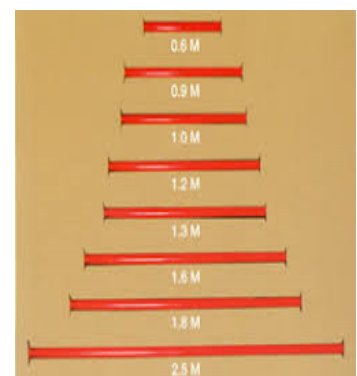
CUP-LOCK SYSTEM SCAFFOLDING



HORIZONTAL LEDGER

- Horizontal ledgers are Manufactured from ARAMCO specified steel scaffold tube of 48.3mm outside Diameter with a wall thickness of 3.2mm conforming to EN-10219.
- This Horizontal ledgers are manufactured in various sizes.
- All ledgers and transoms in corporate symmetrical forged blade ends making assembly quick & simple and allows components to be completely interchangeable.
- Horizontals locate in the bottom cups of the standards and are secured by locking top cups.

CUP-LOCK SYSTEM SCAFFOLDING



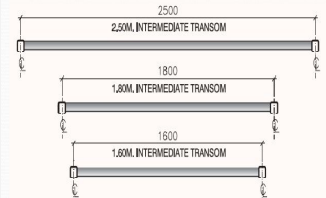
INTERMEDIATE TRANSOM

· The intermediate transom enables the splitting of a bay in order to create an opening between decked platforms, this component locates over the ledgers between each set of standards. This item is also used for the supporting of Timber scaffolding boards when system decks are not used.

· This Intermediate transoms are manufactured in various sizes for access and support.



CUP-LOCK SYSTEM SCAFFOLDING



STEEL BOARDS

· Platforms on scaffolding structures are generally formed using a type of board, which are placed along the length of the scaffold lift. They are supported at centers which are determined by the board type and / or the scaffold load class.

· Steel boards are non-inflammable & fire resistant.

STEEL PLANK



WOODEN BOARDS

· Wooden planks are individual timber boards that serve as a flooring member of a scaffold platform.

· Boards are manufactured in various sizes.

WOODEN PLANK



ADJUSTABLE BASE JACK

- Adjustable Base Jack is a load carrying device used at base of the scaffold to compensate for variation in ground level.
- Adjustable Base jack have 5mm thick bearing plate welded to the end of universal jack.

BASE JACK



BASE PLATE

- Base Plate is a steel plate providing a flat bearing surface with a spigot or screw jack for distributing the load from post.
- Base plate has an integral spigot and fixing holes for use with sills.

BASE PLATE



UNIVERSAL JACK

- Universal jack provides a method of adjustment which can be used at either top or bottom of a scaffold support structure.
- It is used in conjunction with forehead and adapters and can accept the full loading Capacity of cup-lock when fully braced

UNIVERSAL JACK



U HEAD JACK

- U Head Jack are designed to be used in conjunction with adjustable system scaffolding.
- The main function of a U Head Jack is to hold timber or aluminum beams in securely in place.

U HEAD JACK



CASTER WHEEL

- Caster wheel's is a pivoting wheel, containing a wheel lock which is attached to a vertical post (standard) od a mobile scaffold to allow for manual movement of the scaffold.

CASTER WHEEL



SWIVEL BASE PLATE

- Swivel base plate is to support standards on sloping ground.
- It should always be secured to a sound timber sole plate.

SWIVEL BASE PLATE



SCAFFOLD TUBES

- Scaffolding Tube - Steel Tube is Hot Dipped Galvanized to BS EN 10219 standards and has a wall Thickness of 3.2mm.
- Scaffolding Tube is specified for all Load Bearing Scaffolding structures where personnel are involved.
- Scaffolding Tube can be use for all type of bracing in cup-lock system scaffold or tube & coupler scaffold

TUBES



STEEL LADDER

- The Steel Scaffold Ladder is an industrial ladder, Features include square, nonslip rungs, angled to produce flat surface in position of use

BASE JACK



SCAFFOLDING ACCESSORIES

- Right angle double coupler 90-degree load bearing coupler.
- Double coupler used for connecting two tubes together at right angles.
- It is a critical component in the scaffold structure and must resist both slip and distortion.

DOUBLE COUPLER



- Swivel coupler is used to connecting two tubes together at an angle other than 90-degree.
- Swivel coupler can be uses to connect all type of bracing.

SWIVEL COUPLER



- Forged single coupler by Strong forge, connects two tubes at right angles.
- This fitting is designed for connecting board supports (transoms) or putlogs to ledgers in scaffolding and also used in lighting rigs, staging and guard rails.
- Single couplers can also be used to secure toe boards access ladders on a scaffold.

SINGLE COUPLER



- Board retaining coupler is used to secure the boards of scaffold platforms
- Board retaining coupler connect to transom at both end of scaffold platform..

BOARD COUPLER





TOE BOARD CLAMP



SINGLE COUPLER



ADJUSTABLE FORK



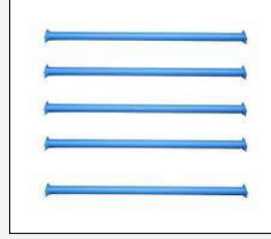
ALUMINIUM BHEEM



U HEAD JACK



ADJUSTABLE BASE JACK



CUPLOCK LEDGER



INTERMEDIATE TRANSOM



LVL BOARD OSHA



STEEL BOARDS



STEEL LADDER



BEAM LADDER



CASTOR WHEEL



**SCAFFOLDING
KOREAN FRAMES**



STEEL PROPS



ALUMINIUM BEAMS



COUPLER



BASE PLATE

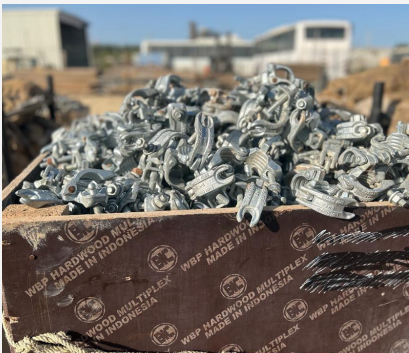


SWIVEL BASE PLATE

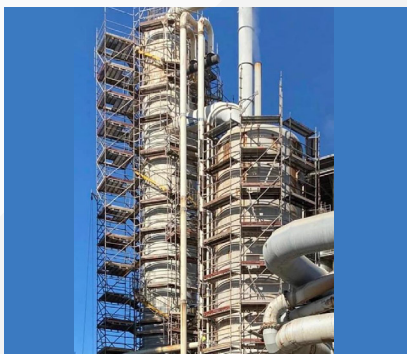
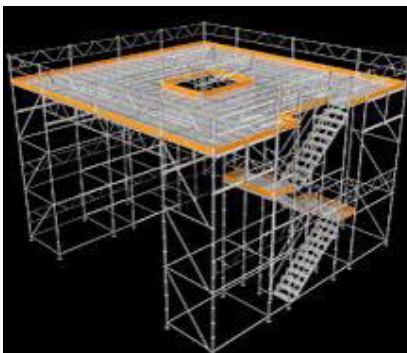


TUBES

GALLERY



GALLERY



IN HOUSE TRAINING



HEALTH. SAFETY. SECURITY.

Wings International Scaffolding Solutions is committed to the safety and well-being of its customers, employees, and the public. The company adheres to strict safety standards and regulations in all aspects of its operations, including design, installation, maintenance, and rental. The company's team of professionals is trained to identify and address potential safety hazards to ensure that scaffolding equipment is safe and reliable for use on construction and renovation projects.



CERTIFICATIONS

شهادة تسجيل فرع شركة
Branch Of Company Registration Certificate

وزارة التجارة
Ministry of Commerce

الرقم التجاري للشركة: شركة فرقة لتقنيات والمعارض وحده
رقمها: 4710-35712 الجويل 7990
مقرها الرئيسي: 4710-35712 الجويل 7990
رأسمها: 3000000 ريال سعودي

رقم سجل الممارس الرئيسي: 208121610
الزمن البريدي: 35712
ص ب: 7
مصدره: الجليل

الرقم التجاري: شركة الجولاح العربي لتقنيات العمارة
القانوني: 3072 المدينة المنورة: حي صناعة العربي، 9122
خالق: 13346666
الزمن البريدي: 35712
ص ب: 7
مصدره: الجليل

التشريع: لتطابق على بنات الأنشطة الجولاح مسح الرمز التجاري
اسم المدمج (الاسم): شبح محمد زهر
الجنسية: سعودي
التاريخ الميلاد: 1406
مكان الميلاد: جدة

رقم السجل المدني: 912222003
تاريخه: 1406
مصدره: جوازات الجليل

سلطات المدير: حسب ما نص عليه عقد الشركة
يخدم مكتب السجل التجاري بمدينة: الجليل
بأنه تم تسجيل فرع الشركة المذكورة في: مدينة: الجليل
والتاريخ: 1414/06/20
مجموع الأرقام: 33121190222
رقم: 1414/06/20

شهادة تسجيل في ضريبة القيمة المضافة
VAT Registration Certificate

الهيئة العامة للغضائية والجمارك
Zakat, Tax and Customs Authority

رقم التسجيل الضريبي: 3199330000000000
رقم التسجيل الضريبي: 3199330000000000
رقم التسجيل الضريبي: 3199330000000000

اسم العميل: شركة فرقة لتقنيات والمعارض وحده
رقم التسجيل الضريبي: 3199330000000000

الزمن البريدي: 35712
ص ب: 7
مصدره: الجليل

اسم العميل: شركة فرقة لتقنيات والمعارض وحده
رقم التسجيل الضريبي: 3199330000000000

الزمن البريدي: 35712
ص ب: 7
مصدره: الجليل

إثبات عنوان
Address Proof

البيانات الشخصية
Personal Details

الرقم القومي: 912222003
تاريخ الميلاد: 1406
مصدره: جوازات الجليل

تفاصيل العنوان
Address Details

العنوان الرئيسي: مكة المكرمة
العنوان الفرعي: مكة المكرمة
العنوان الثالث: مكة المكرمة

العنوان الإلكتروني: مكة المكرمة

Certificate of Registration

This is to certify that Occupational Health & Safety Management System of

WING INTERNATIONAL CONTRACTING EST.
P.O. Box: 30598, Prince Sultan Bin Abdul Aziz Street Jubail 31951, Kingdom of Saudi Arabia

is in accordance with the requirements of the following standard

ISO 45001:2018
(Occupational Health & Safety Management System)

SCOPE
SUPPLY OF SCAFFOLDING MATERIALS (SALES & RENTAL) AND ITS SERVICES
(IAF Code: 29.32)

Certificate Number : SCK09/WIC23964425
Initial Registration Date : 24-Jun-2023
1st Surveillance Date : 24-Jun-2024
2nd Surveillance Date : 24-Jun-2025
Certificate Expiry Date : 23-Jul-2026

To verify certificate, visit at:
www.sckcerts.com
www.iafcertsearch.org

Issued by SCK Certifications Pvt. Ltd.
Director

IAF ACCREDITED
Management Systems
Certification Body
MSCB-244

Certificate of Registration

This is to certify that Environmental Management System of

WING INTERNATIONAL CONTRACTING EST.
P.O. Box: 30598, Prince Sultan Bin Abdul Aziz Street Jubail 31951, Kingdom of Saudi Arabia

is in accordance with the requirements of the following standard

ISO 14001:2015
(Environmental Management System)

SCOPE
SUPPLY OF SCAFFOLDING MATERIALS (SALES & RENTAL) AND ITS SERVICES
(IAF Code: 29.32)

Certificate Number : SCK09/WIC23964424
Initial Registration Date : 24-Jun-2023
1st Surveillance Date : 24-Jun-2024
2nd Surveillance Date : 24-Jun-2025
Certificate Expiry Date : 23-Jul-2026

To verify certificate, visit at:
www.sckcerts.com
www.iafcertsearch.org

Issued by SCK Certifications Pvt. Ltd.
Director

IAF ACCREDITED
Management Systems
Certification Body
MSCB-244

Certificate of Registration

This is to certify that Quality Management System of

WING INTERNATIONAL CONTRACTING EST.
P.O. Box: 30598, Prince Sultan Bin Abdul Aziz Street Jubail 31951, Kingdom of Saudi Arabia

is in accordance with the requirements of the following standard

ISO 9001:2015
(Quality Management System)

SCOPE
SUPPLY OF SCAFFOLDING MATERIALS (SALES & RENTAL) AND ITS SERVICES
(IAF Code: 29.32)

Certificate Number : SCK09/WIC23964423
Initial Registration Date : 24-Jun-2023
1st Surveillance Date : 24-Jun-2024
2nd Surveillance Date : 24-Jun-2025
Certificate Expiry Date : 23-Jul-2026

To verify certificate, visit at:
www.sckcerts.com
www.iafcertsearch.org

Issued by SCK Certifications Pvt. Ltd.
Director

IAF ACCREDITED
Management Systems
Certification Body
MSCB-244

OUR CLIENTS

سابك
sabic

حديد
hadeed

بتروكيما
petrokemya

سبكيم
Sipchem

سافكو
safco

شروق
sharq

كيان السعودية
saudi kayan

كيما نول
CHEMANOL

FARABI
PETROCHEMICALS
الفارابي
مستلزمات البتروكيماويات

التميمي
AMIMI

PLANT-TECH
ARABIA
ISO 9001-2008 Certified Co.

التصنيع
TASNEE



**TOGETHER
WE ACHIEVE.**





Your Trusted Scaffolding Partner...

Al Makka Al Moukarrama Jubail City Center,
Al Jubail 35514, Saudi Arabia.

Email : info@wingic.com

Mobile/Whatsapp : +966 594920775 / +966 570646526 / +966 569455736



www.wingic.com